

Cutlass Fasteners, Inc.

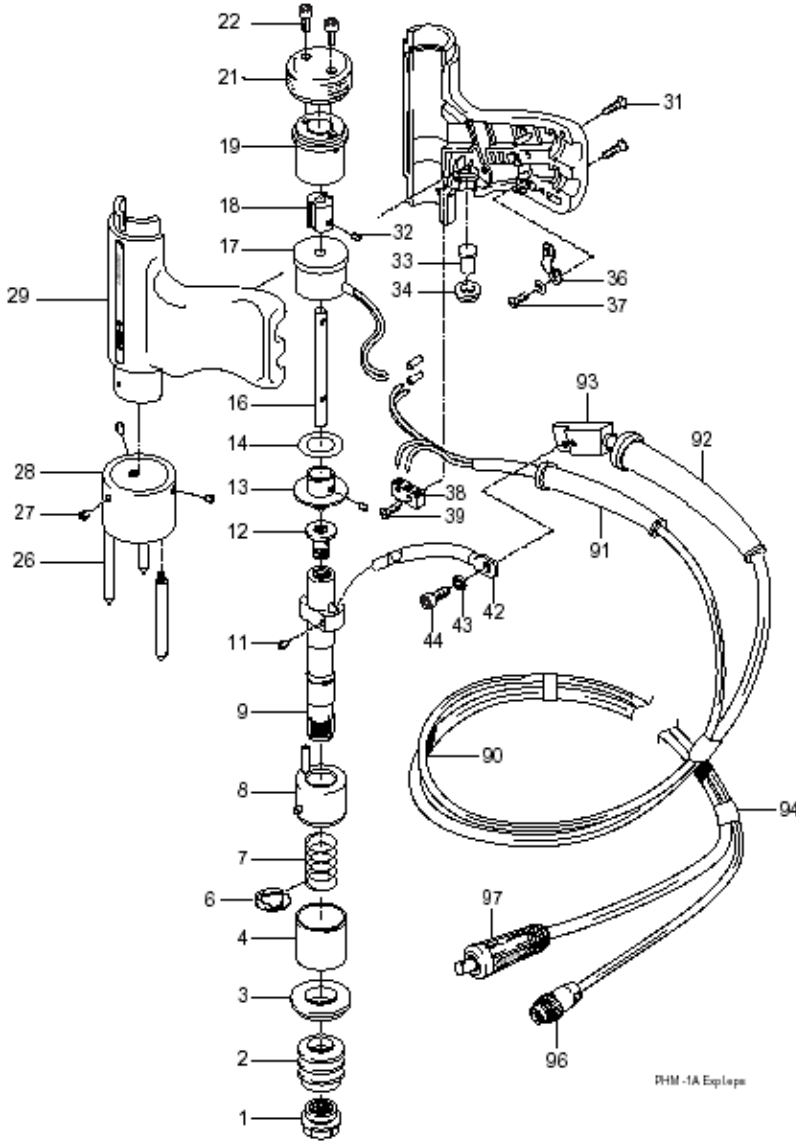
83 Vermont Ave., Unit 6, Warwick, RI 02888
 Tel: (401) 732-6333 Fax: (401) 732-6336
 cutlass-studwelding.com

Stud Welding...

- Fasteners
- Equipment
- Service

PHM-1A PARTS LIST

PHM-1A GUN PARTS



#	PART NO.	DESCRIPTION	QTY
	90-10-2211	COMPLETE SIGNUS PHM-1A	1
1	80-40-1738	TAPER CHUCK ADAPTOR	1
2	80-40-1097	BELLOWS	1
3	80-40-1023	INSULATING BUSH	1
4	80-40-1021	GUIDE BUSH	1
6	80-40-1023	LOCK WASHER	1
7	80-15-1038	MAIN SPRING	1
8	80-40-1022	ANTI ROTATE GUIDE	1
9	80-40-1011	SPINDLE PHM-1A	1
11	80-15-1011	M3 X 12 SOC. SET SCREW	1
12	80-40-1033	LIFT ADAPTOR	1
13	80-40-1034	LIFT ASSEMBLY	1
14	80-40-1035	BRASS WASHER	1
16	80-40-1036	LIFT SHAFT	1
17	80-30-1010	LIFT SOLENOID	1
18	80-40-1037	SLIDING BLOCK	1
19	80-40-1025	LIFT ADJUSTER	1
21	80-40-1075	REAR CAP	1
22	80-15-1030	M3 X 6 SOC. HD SCREW	1
26	80-40-1012	TRIPOD LEG	3
27	80-15-1010	M5 X 4 SOC. SET SCREW	1
28	80-40-1013	TRIPOD FACEPLATE	1
29	80-40-1602	GUN BODY (TOP & BOTTOM)	1
33	80-40-1016	TRIGGER BUTTON	1
34	80-40-1017	TRIGGER GUIDE	1
36	80-10-1016	M4 LOCK WASHER	1
37	80-15-1061	M2.5 X 8 MACH. SCREW	2
38	80-50-1013	TRIGGER SWITCH	1
39	80-15-1015	M2 X 10 MACH. SCREW	2
42	80-72-1012	INTERNAL WELD CABLE	1
43	80-15-1016	M4 LOCK WASHER	1
44	80-15-1012	M4 X 8 SOC. HD SCREW	1
90	80-72-1022	WELD/CONTROL CABLE ASSY.	1
91	80-10-1011	CONTROL CABLE SLEEVE	1
92	80-10-1013	WELD CABLE SLEEVE	1
93	80-35-1134	CONTACT BLOCK SET	1
94	80-10-1012	CABLE BINDER	10
96	999-136	CONTROL PLUG C/M	1
97	650-669	DINSE WELD PLUG C/M	1
100	80-42-0011	LABEL PHM-1A	1

ALTERNATE PARTS...

#	PART NO.	DESCRIPTION	QTY
1A	80-40-1741	B COLLET ADAPTOR	1
28A	80-40-1739	SINGLE LEG FACEPLATE (fitted as standard)	1
28B	80-40-1113	TWIN LEG FACEPLATE	1